



CELLO SERIES CC 8

Compact Design, Massive Impact: Loudspeakers that Deliver

The Cello CC 8 is a two-way, passively crossed-over coaxial loudspeaker using a common magnetic structure with an integrated 8" (200 mm) LF and a 1" (25 mm) exit HF. This compact cabinet can be used with or without a sub-woofer, depending on the application. An ideal point source with the LF and HF mounted on the same axis, eliminates off-axis variations. Optimizing and improving audio field, its high-quality, transparent sound allows customers to enjoy a powerful, clear and natural sound system.

It is best used for loud background or foreground

music. CC 8 is a winner when it comes to A/V applications and corporate meetings. Combined with any of the Contrabass subs, Cello CC 8 is ideal for small, high energy lounge with low ceiling height. As a stand-alone loudspeaker, it has varied applications, and it can be incorporated as in-fill loudspeaker in a distributed sound system.

The specialized and phase-optimized crossover network ensures minimum loss and maximum clarity. With a 90 degree conical dispersion, the enclosure can be used in vertical (portrait) orientation.

KEY FEATURES

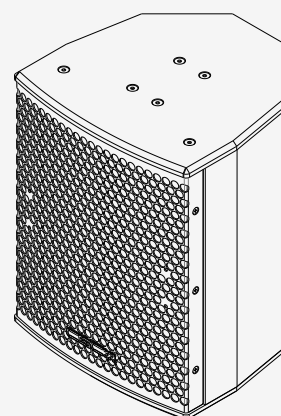
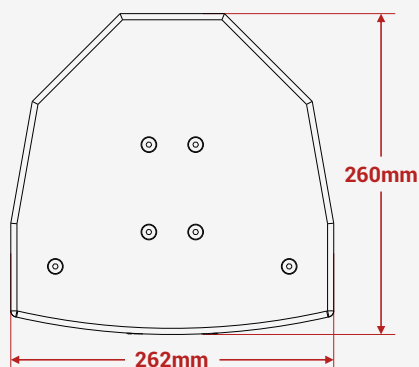
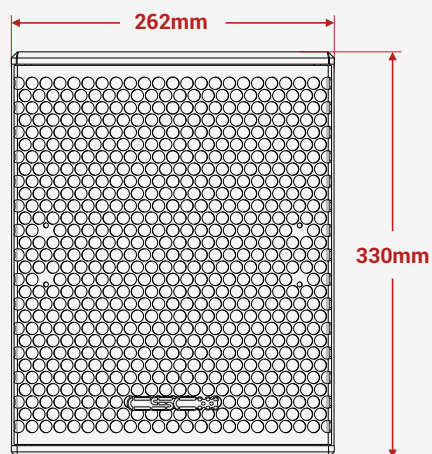
- Coaxial, ultra-compact, passive two-way system
- Elegant birch ply enclosure
- Vertical and horizontal mounting options
- Perforated steel grill
- Discreet mounting accessories
- Available in black & white colours
- Mounting at the top and behind the cabinet & top hat

SYSTEM APPLICATIONS

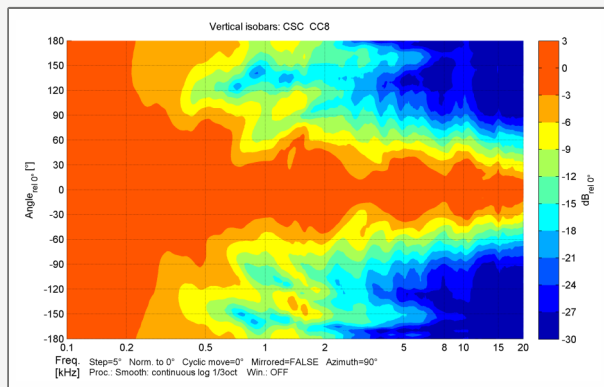
- Lounges
- All types of A/V spaces
- Convention centres
- Leisure and gaming centres
- Places of worship
- Gyms and spas

| MODEL NO | CC 8 |
|--|---|
| Type | Compact two way coaxial mid high |
| Frequency Response | 75 Hz-18.5 kHz \pm 3 dB |
| Drivers | LF: 8" (200 mm) with a 2.5" (65 mm) voice coil, HF: 1" (25 mm) compression driver with a 1" (25 mm) voice coil |
| Recommended Amplifier Upto | 500 watts |
| Sensitivity (1 W / 1 m) | 94 dB |
| Maximum SPL (9) | 117 dB continuous, 123 dB Max |
| Nominal Impedance | 8 ohms |
| Dispersion | 90° conical |
| Crossover | HPF 65 Hz full range / 100 Hz with sub |
| Enclosure | Baltic birch ply |
| Finish | Non-toxic Textured black/ white paint |
| Protective Grill | Perforated steel |
| Connectors | 2 x Neutrik NL4 |
| Pin Connections | Input: \pm 1, Link through: \pm 2 |
| Standard Colours | Black / White |
| Fittings | Rear / Top standard mounting points, Top hat |
| Horn | NA |
| Nominal/ AES Power | 250 watts / 15 watts |
| Maximum/ Continuous/ Program Power | 500 watts / 30 watts |
| Peak Power | 1000 watts / 60 watts |
| Accessories | Wall / ceiling mount bracket, Extension pipe |
| Dimensions - Product (in mm) | (W) 262 x (H) 330 x (D) 260 |
| Dimensions - Including packing (in mm) | (W) 330 x (H) 400 x (D) 325 |
| Net Weight (kgs) | 10 |
| Shipping Weight (kgs) | 12 |

Mid highs measured on-axis in full space @ one watt/1-meter using band-limited pink noise in the en-devour to continuously improve the product with design refinements introduced into existing products. Any current CSC product may differ in some respect from its published description. However, this will always equal or exceed the original design specifications. Every CSC Product is built to the highest standards and tested to ensure that it meets the performance criteria specified.

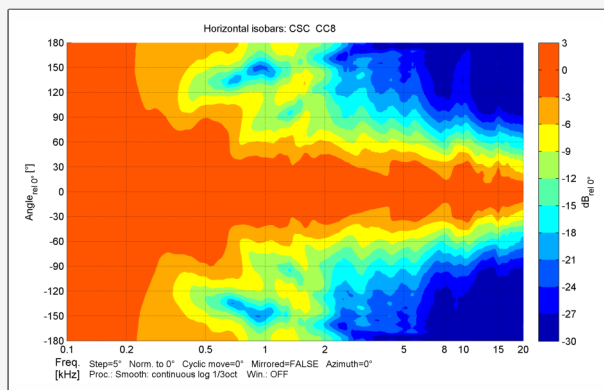


Vertical Polar Coverage (-6 dB)



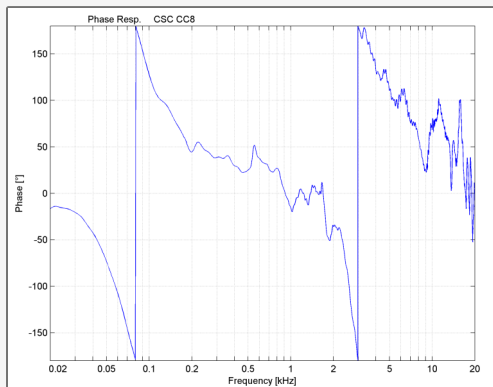
The CC8's compact coaxial design maintains balanced vertical dispersion of 90° across short-throw distances. Its consistent beam control ensures clear coverage in smaller venues or nearfield applications.

Horizontal Polar Coverage (-6 dB)



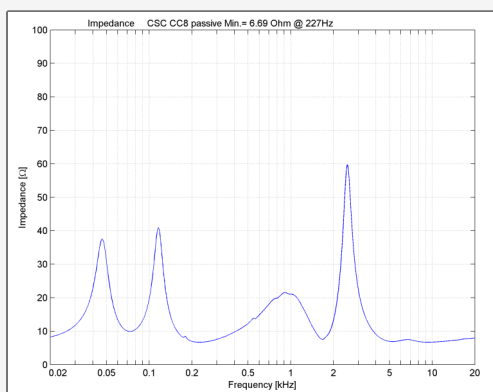
Stable 90° horizontal coverage makes CC8 ideal for distributed audio systems. Even dispersion minimizes overlaps in ceiling or wall-mount grid configurations.

Phase Response



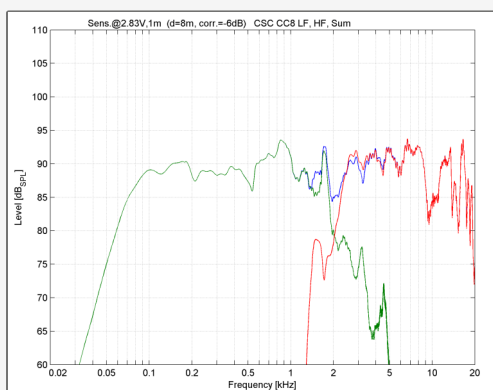
With minimal phase rotation through the vocal range, CC8 supports clear speech intelligibility and precise imaging in background music or paging systems.

Impedance Plot



Maintains nominal 8-ohm load with predictable impedance profile, simplifying amplifier matching and ensuring a stable installation.

Frequency Response (Crossover Split)



Offers full-range response from approximately 75 Hz to 18 kHz. Dedicated eq's will ensure a flat system.