



CELLO SERIES CF 5

Compact Design, Massive Impact: Loudspeakers that Deliver

The CF 5 from CSC is a compact passive loudspeaker designed for architectural integration where discreet aesthetics and professional-grade sound are required.

Equipped with a 5" LF driver and 3" HF paper cone, it delivers natural, transparent sound ideal for cafes, meeting rooms, under-balcony zones, and A/V setups. Its conical dispersion pattern ensures smooth, even coverage with minimal tonal variation.

Housed in a durable Baltic birch cabinet, the CF 5 is available in black or white matte texture finishes and supports both vertical and horizontal mounting. Despite its small footprint, it delivers clarity and reliable output, making it a trusted choice for integrators. With its balance of subtle design, clean voicing, and installation flexibility, the CF 5 is perfect for unobtrusive yet high-quality sound reinforcement.

KEY FEATURES

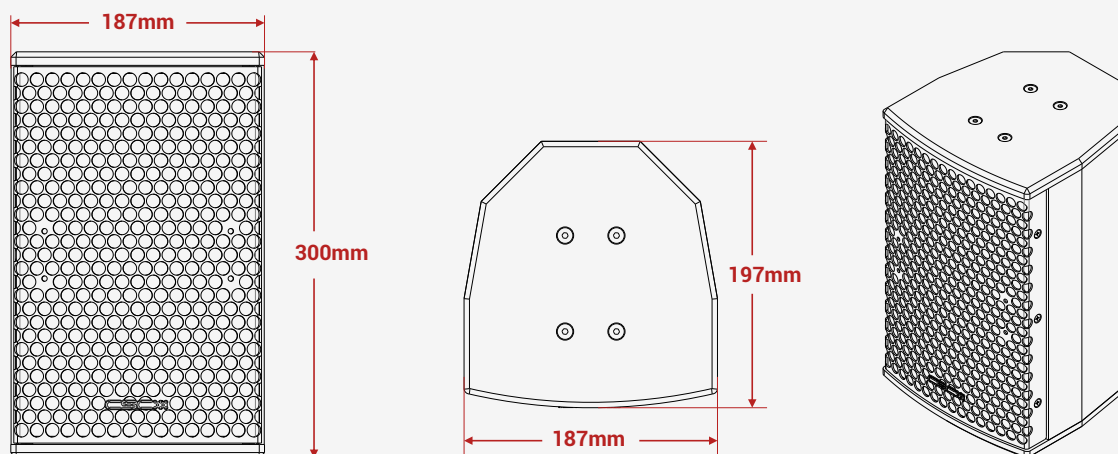
- Compact, two-way passive systems
- Discreet Baltic birch enclosures
- Wide dispersion and natural sound
- Available in black or white
- Flexible vertical or horizontal mounting

SYSTEM APPLICATIONS

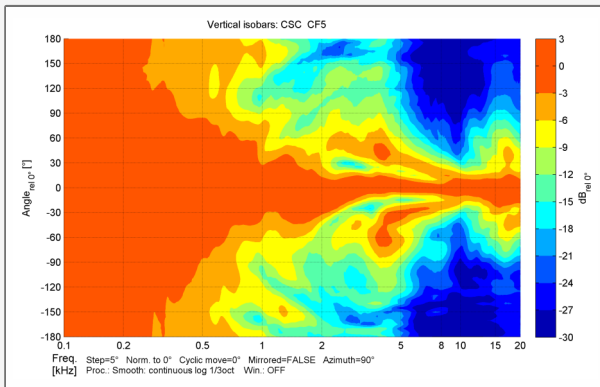
- Home and corporate AV systems
- Cafes, lounges, and restaurants
- Under-balcony and architectural installs

MODEL NO	CF 5
Type	Compact two way Full range
Frequency Response (1)	80Hz-16kHz \pm 3 dB
Drivers	LF: 5" (125 mm) with a .75" (19 mm) voice coil, HF: 3" (77 mm) paper cone
Recommended Amplifier Upto	200 watts
Sensitivity (1 W / 1 m)	90 dB
Maximum SPL (9)	110 dB continuous, 116 dB Max
Nominal Impedance	8 ohms
Dispersion	90° conical
Crossover	HPF 75 Hz full range / 110 Hz with sub
Enclosure	Baltic birch ply
Finish	Non-toxic Textured black/white paint
Protective Grill	Perforated steel
Connectors	2 x Neutrik NL4
Pin Connections	Input: \pm 1, Link through: \pm 2
Standard Colours	Black / White
Fittings	Rear / Top standard mounting points
Horn	NA
Nominal/ AES Power	100 watts
Maximum/ Continuous/ Program Power	200 watts
Peak Power	400 watts
Accessories	Wall / ceiling mount bracket, Extension pipe
Dimensions - Product (in mm)	(W) 187 x (H) 300 x (D) 197
Dimensions - Including packing (in mm)	(W) 450 x (H) 380 x (D) 260
Net Weight (kgs)	5
Shipping Weight (kgs)	12 (Shipped in pair)

Mid highs measured on-axis in full space @ one watt/1-meter using band-limited pink noise in the en-devour to continuously improve the product with design refinements introduced into existing products. Any current CSC product may differ in some respect from its published description. However, this will always equal or exceed the original design specifications. Every CSC Product is built to the highest standards and tested to ensure that it meets the performance criteria specified.

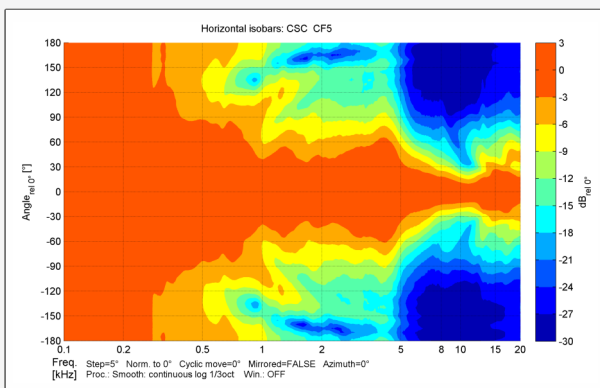


Vertical Polar Coverage (-6 dB)



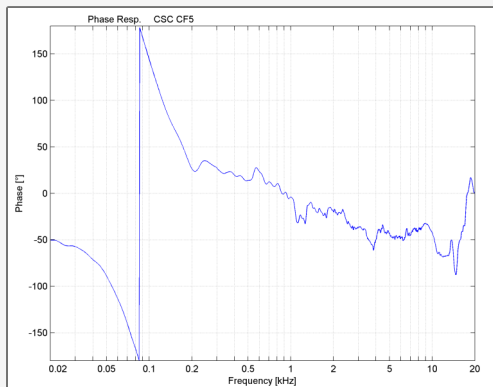
The CF5's controlled vertical dispersion is optimized for nearfield listening zones such as cafes, offices, and small lounges.

Horizontal Polar Coverage (-6 dB)



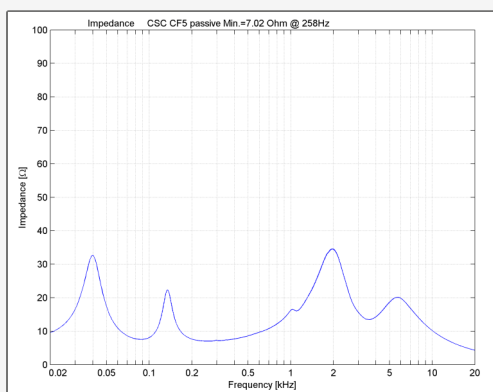
Provides wide horizontal coverage across seating areas, ensuring clarity even at off-axis positions.

Phase Response



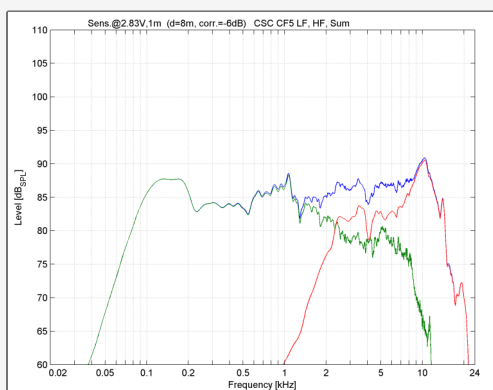
Well-managed phase through the midrange supports vocal presence and instrumental detail in low-SPL environments.

Impedance Plot



Nominal 8-ohm design supports easy integration into distributed audio systems or small passive zones.

Frequency Response (Crossover Split)



Clean response from 90 Hz to 19 kHz allows for full-range playback or pairing with a compact subwoofer.