



STRING SERIES ST 23

Compact Design, Massive Impact: Loudspeakers that Deliver

The ST 23 scales performance beyond the ST 3 while maintaining the slim String Series profile. Outfitted with dual 3" full-range drivers in a rigid extruded aluminum cabinet with no parallel walls, it minimizes resonances and provides clear, extended output.

Its wide horizontal and controlled 60° vertical dispersion ensures even coverage, reducing off-axis variations. Designed for distributed sound systems, it suits restaurants, offices, boutiques, small bars, galleries, and under-balcony zones.

Despite its compact footprint, it delivers CSC's signature balanced mids, smooth highs, and low distortion.

The omni-directional mounting bracket supports flexible placement, while a perforated powder-coated grille protects the drivers. Available in black or white matte texture finishes, the ST 23 integrates seamlessly into interiors, either standalone or paired with subwoofers like the CR 10s or CR 210s.

KEY FEATURES

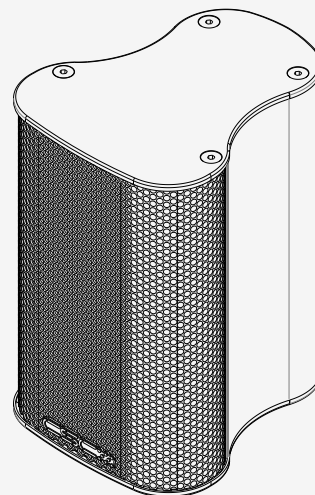
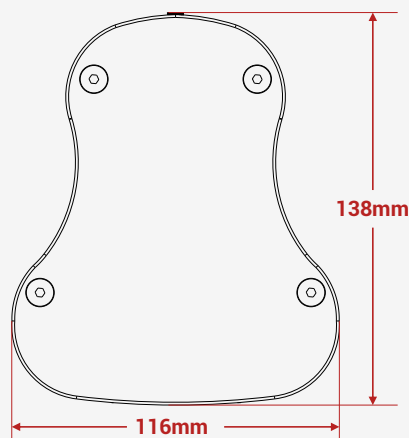
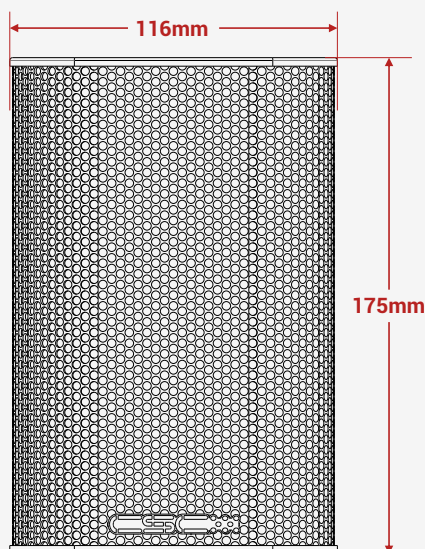
- Compact, high performance
- Seamlessly combines with the CR 10s and CR 210s
- Fast integral wall/ceiling bracket
- Easy to install with minimal wiring
- Can be retrofitted into existing venues

SYSTEM APPLICATIONS

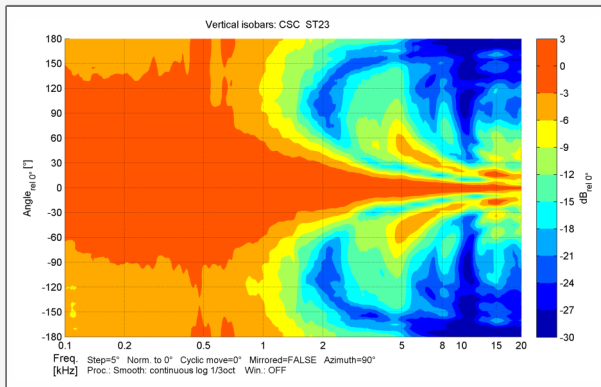
- Small bars and restaurants
- Museums and A/V spaces
- Convention centres
- Cafes
- Retail outlets
- Recreation centres
- Gyms
- Homes

MODEL NO	ST 23
Type	Ultra compact satellite
Frequency Response (1)	150 Hz-16 kHz \pm 3 dB
Drivers	LF: 2 x3" (77 mm) neo driver
Recommended Amplifier Upto	80 watts
Sensitivity (1 W / 1 m)	94 dB
Maximum SPL (9)	110 dB continuous, 116 dB Max
Nominal Impedance	16 ohms
Dispersion	90° x 60°
Crossover	HPF 170 Hz active/ passive
Enclosure	Extruded Aluminium
Finish	Powder coated
Protective Grill	Perforated steel
Connectors	2 x Phoenix connectors
Pin Connections	Input: \pm 1, Link through: \pm 2
Standard Colours	Black / White
Fittings	Rear mounting
Horn	NA
Nominal/ AES Power	40 watts
Maximum/ Continuous/ Program Power	80 watts
Peak Power	160 watts
Accessories	Bracket
Dimensions - Product (in mm)	(W) 116 x (H) 175 x (D) 138
Dimensions - Including packing (pair) (in mm)	(W) 290 x (H) 225 x (D) 192
Net Weight (kgs)	2
Shipping Weight (kgs)	4 (Shipped in pairs)

Mid highs measured on-axis in full space @ one watt/1-meter using band-limited pink noise in the en-deavour to continuously improve the product with design refinements introduced into existing products. Any current CSC product may differ in some respect from its published description. However, this will always equal or exceed the original design specifications. Every CSC Product is built to the highest standards and tested to ensure that it meets the performance criteria specified.

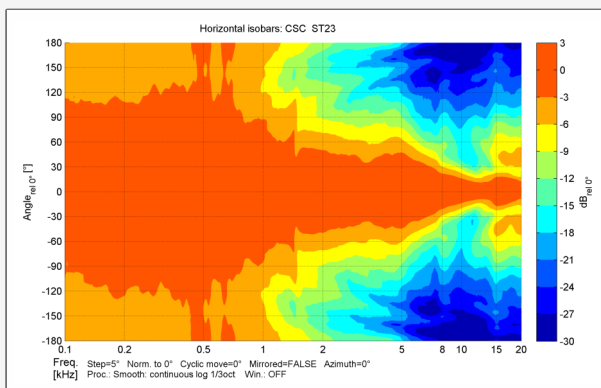


Vertical Polar Coverage (-6 dB)



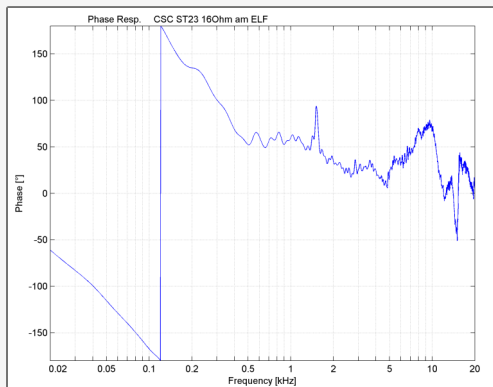
The ST23's dual 3" wideband drivers ensure tight vertical beam control of plus minus 40 degrees up to 8 kHz, reducing ceiling/floor reflections in compact zones.

Horizontal Polar Coverage (-6 dB)



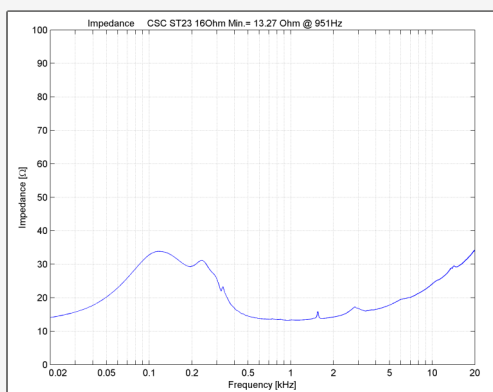
Delivers 90° horizontal spread up to about 7 kHz making it suitable for most vocal applications.

Phase Response



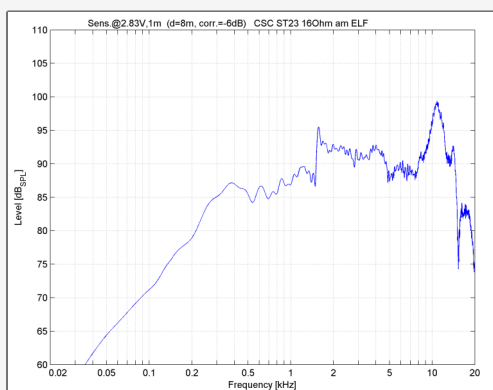
Full-range driver architecture ensures phase coherence across the audio band, minimizing delay smear.

Impedance Plot



16 ohms nominal with low inductance design for smoother frequency response and amplifier ease.

Frequency Response (Crossover Split)



Wideband from 150 Hz to 17 kHz, delivering intelligibility for paging or focused foreground audio.