



### STRING SERIES ST 43

Compact Design, Massive Impact: Loudspeakers that Deliver

The ST 43 from CSC's String Series is a slim, high-clarity passive loudspeaker designed for venues requiring precise vocal projection in acoustically difficult spaces. Outfitted with four 3" full-range drivers inside an extruded aluminum enclosure without parallel walls, it eliminates resonances while delivering clean mids, smooth highs, and low distortion.

Its wide horizontal coverage paired with narrow 20° vertical dispersion reduces reflections, making

it ideal for houses of worship, classrooms, lecture halls, and reverberant spaces. With a dedicated omni-directional bracket, it mounts securely on walls or ceilings while maintaining accurate dispersion.

Available in black or white matte finishes, the ST 43 blends unobtrusively into interiors. It functions as a standalone unit or integrates with CSC subwoofers like the CR 10s and CR 210s for extended low-frequency reinforcement.

#### KEY FEATURES

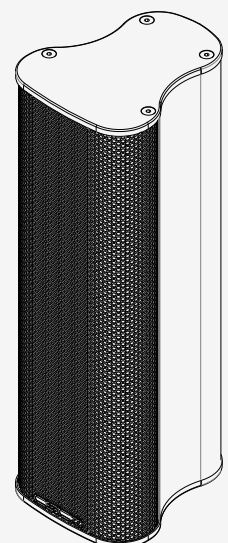
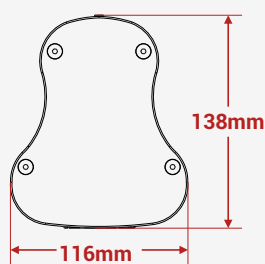
- Compact, high-performance
- Can be used as a stand-alone cabinet
- High power - maximum SPL 116 dB nominal, 122 dB continuous (single unit)
- Fast integral clamp
- Easy to install with minimal wiring
- Can be retrofitted into existing venues
- Can be used in rooms with long reverberation time
- Available in black and white

#### SYSTEM APPLICATIONS

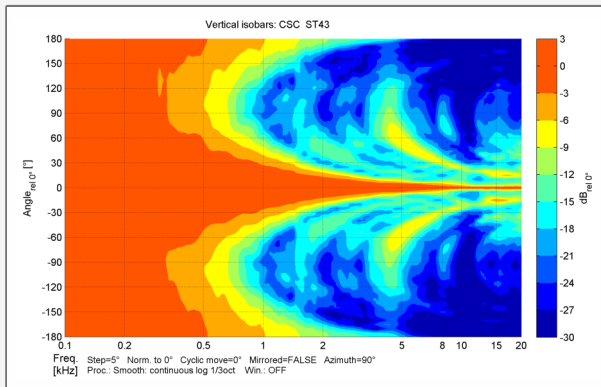
- Museums and A/V spaces
- Convention centers
- Retail outlets
- Airports/ Railway stations
- Recreation centers
- Gyms
- Railway stations
- small churches and class rooms

MODEL NO	ST 43
Type	Column speaker
Frequency Response (1)	150 Hz-16 kHz $\pm$ 3 dB
Drivers	LF: 4 x3" (77 mm) neo driver
Recommended Amplifier Upto	160 watts
Sensitivity (1 W / 1 m)	97 dB
Maximum SPL (9)	116 dB continuous, 122 dB Max
Nominal Impedance	8 ohms
Dispersion	90° x 20°
Crossover	HPF 175 Hz
Enclosure	Extruded Aluminium
Finish	Powder coated
Protective Grill	Perforated steel
Connectors	2 x Phoenix connectors
Pin Connections	Input: $\pm$ 1, Link through: $\pm$ 2
Standard Colours	Black / White
Fittings	Rear mounting
Horn	NA
Nominal/ AES Power	80 watts
Maximum/ Continuous/ Program Power	160 watts
Peak Power	320 watts
Accessories	Clamp
Dimensions - Product (in mm)	(W) 116 x (H) 348 x (D) 138
Dimensions - Including packing (pair) (in mm)	(W) 290 x (H) 385 x (D) 192
Net Weight (kgs)	3
Shipping Weight (kgs)	7 (Shipped in pairs)

Mid highs measured on-axis in full space @ one watt/1-meter using band-limited pink noise in the en-deavour to continuously improve the product with design refinements introduced into existing products. Any current CSC product may differ in some respect from its published description. However, this will always equal or exceed the original design specifications. Every CSC Product is built to the highest standards and tested to ensure that it meets the performance criteria specified.

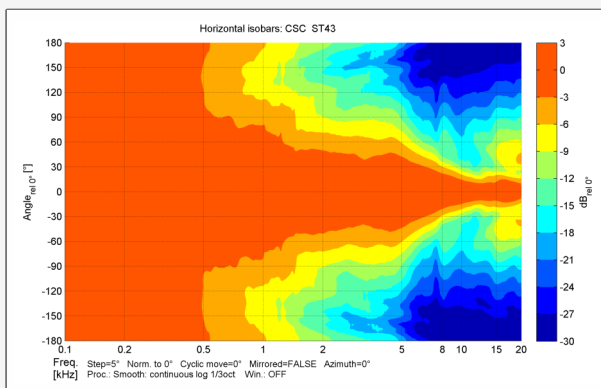


## Vertical Polar Coverage (-6 dB)



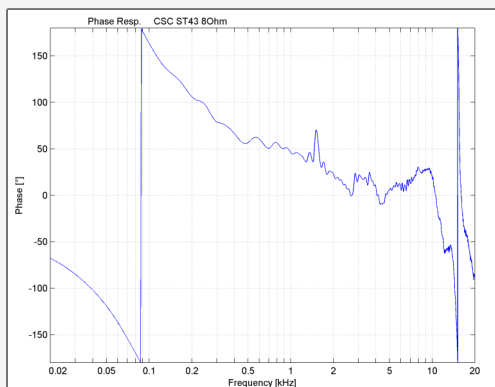
ST43's cabinet design for extremely narrow vertical dispersion. It offers a 20-degree vertical dispersion up to 6 kHz.

## Horizontal Polar Coverage (-6 dB)



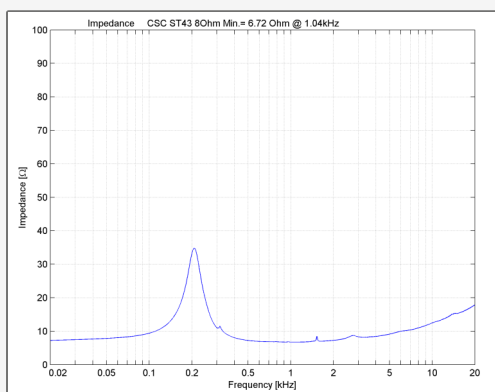
100° horizontal coverage ensures expansive, even audio across a wide room footprint.

## Phase Response



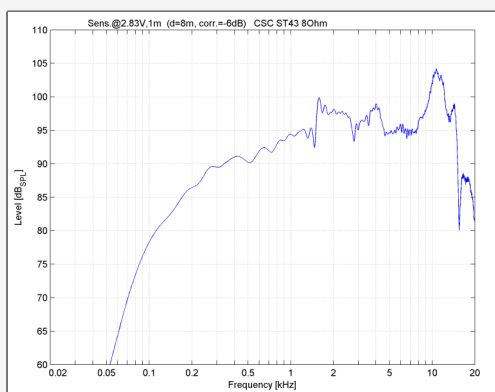
Engineered for minimal phase shift across the spectrum, it reproduces clear vocals and crisp highs.

## Impedance Plot



Stable 8-ohm impedance.

## Frequency Response (Crossover Split)



Response from 150 Hz to 16 kHz makes it suitable as a standalone or with a subwoofer.